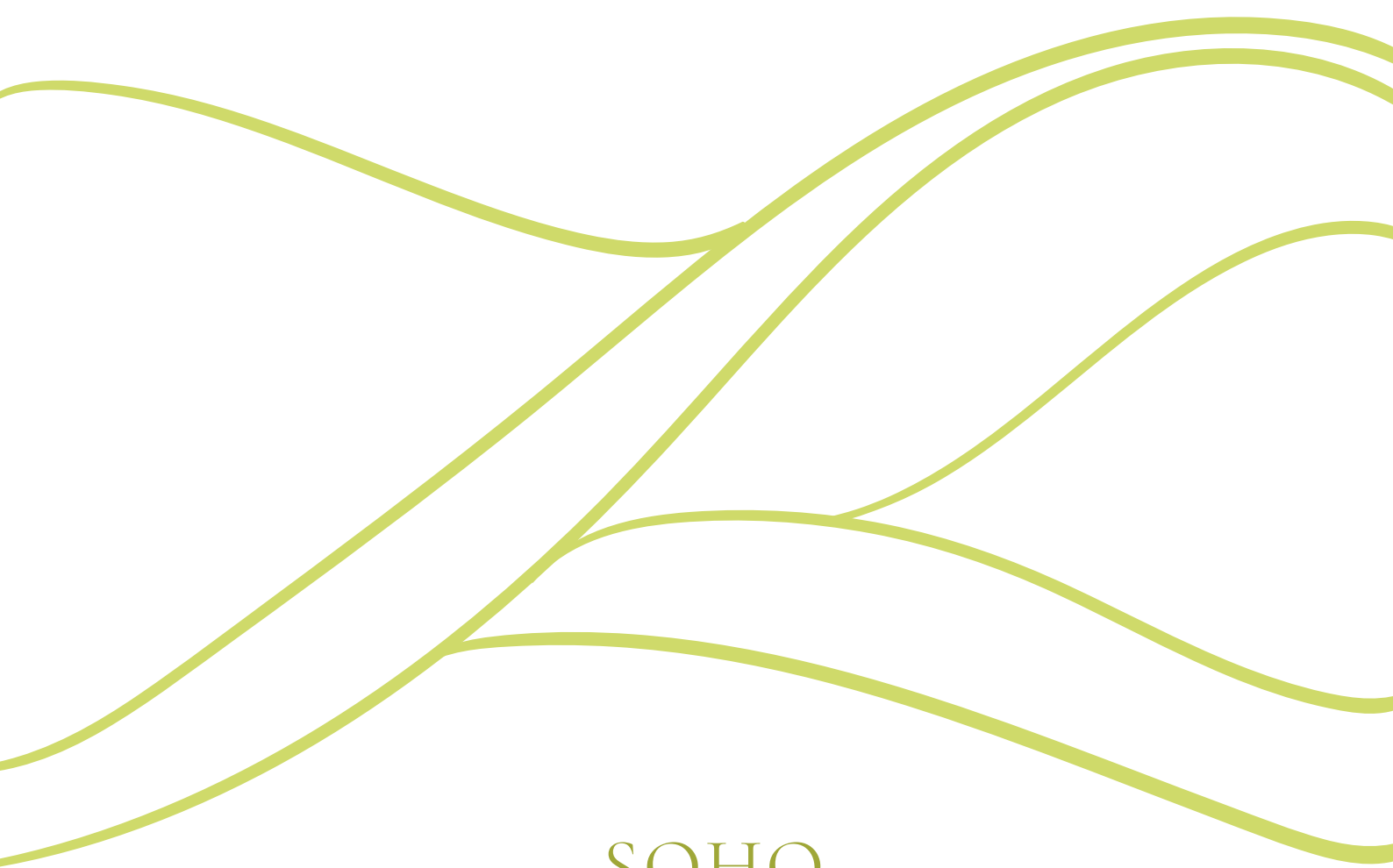




THE AVENUE.

MADDINGLEY

SPRINGFIELD RELEASE



A QUALITY **SOHO** PROJECT
LIVING



THE SOHO LIVING DIFFERENCE

When you choose SOHO Living, you are investing in a space that instills both a physical and emotional connection to its design.

Our developments are a smart investment where the strength in each homeowner's individuality builds a diverse and welcoming community.

The fresh, sharp aesthetics inject style and dignity into your lifestyle. SOHO Living inspires its communities to value exploration, expression of self and collaboration.

Investing with SOHO Living is investing in an optimistic future. Our developments aim to create lasting, elegant neighbourhoods that have a style and modernism that is pioneering and versatile – being young and dynamic and thinking outside the box is what SOHO Living does best.



Artist Impression

YOUR NEW NEIGHBOURHOOD

You'll find a vibrant community full of friendly locals in Maddingley and nearby Bacchus Marsh. Everything you need is right on your doorstep, with supermarkets, healthcare and a range of big brand and boutique shopping options less than 2km away.

There's an abundance of fresh produce and farm-to-table dining options available, thanks to the area's plentiful market gardens and orchards. What's more, some of the region's best restaurants and wineries can be found just around the corner. Whatever your tastes are, you'll find a cornucopia of culinary delights in Bacchus Marsh to satisfy your every need.

MASTERPLAN

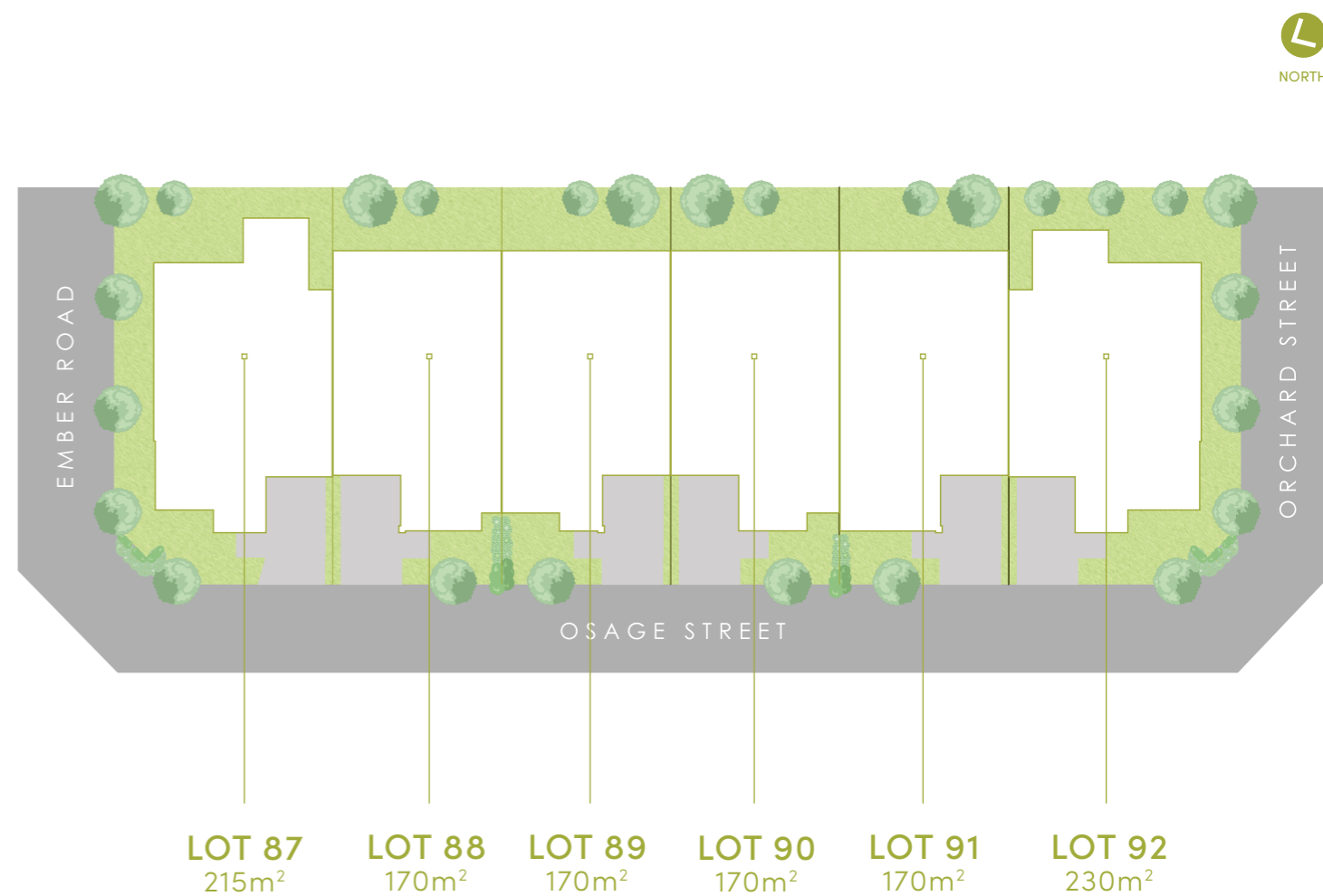
SPRINGFIELD RELEASE



Artist's Impression.

This brochure is intended to provide general information only and does not constitute an offer to supply. All photographs, plans, maps and drawings are illustrative only and may not be to scale. Lot size dimensions, easements, landscape treatments, final road layout, public utility and service infrastructure locations and zoning are subject to change and conditional on authority approval. Prospective buyers should make and rely on their own enquiries, refer to their contract for full terms and conditions, and obtain independent advice including legal and financial advice. CDB-U 50036.

SITE PLAN



This brochure is intended to provide general information only and does not constitute an offer to supply. All photographs, plans, maps and drawings are illustrative only and may not be to scale. Lot size dimensions, easements, landscape treatments, final road layout, public utility and service infrastructure locations and zoning are subject to change and conditional on authority approval. Prospective buyers should make and rely on their own enquiries, refer to their contract for full terms and conditions, and obtain independent advice including legal and financial advice. CDB-U 50036.

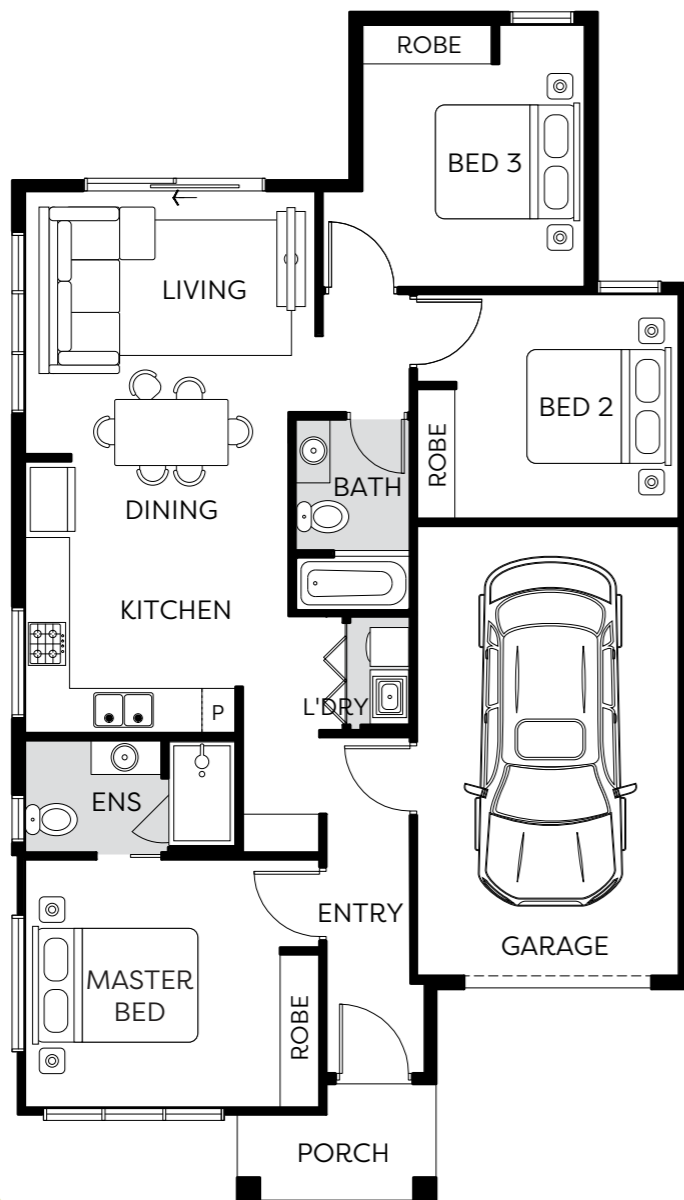


THE JUNIPER

12.33 SQ | LOT 87

3 2 1

Artist Impression



This plan and information is indicative only and may vary without notice. Furniture or vehicles are not included in the sale of the lot. The image depicted here is indicative only. Facade finishes and colours may vary. CDB-U 50036.

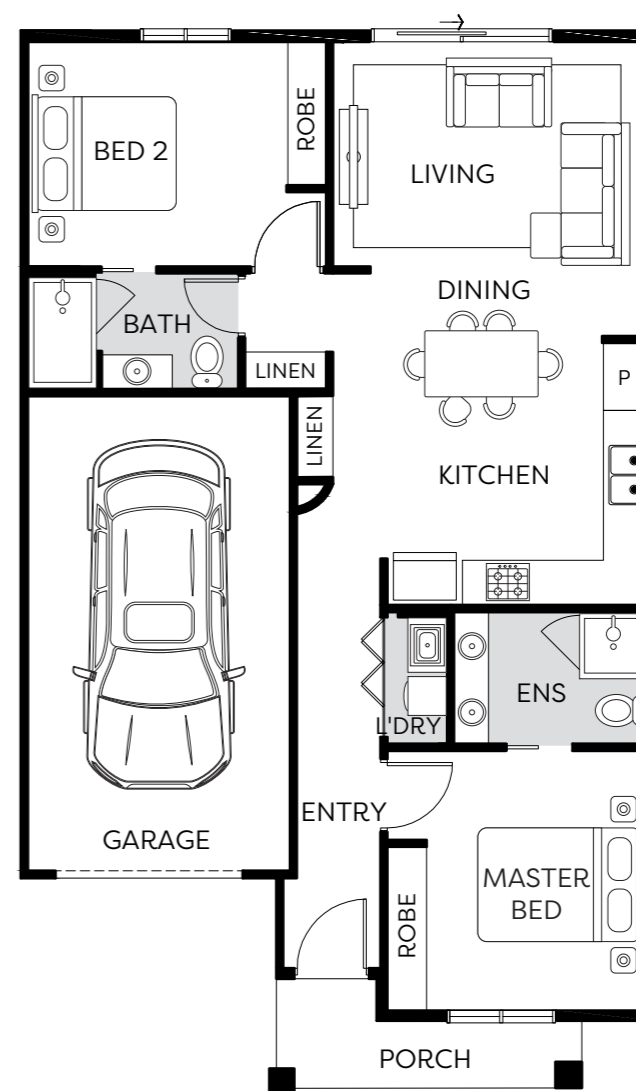
THE MAGNOLIA

11.72 SQ | LOT 88

2 2 1



Artist Impression



This plan and information is indicative only and may vary without notice. Furniture or vehicles are not included in the sale of the lot. The image depicted here is indicative only. Facade finishes and colours may vary. CDB-U 50036.



THE FAIRMONT

11.53 SQ | LOT 89

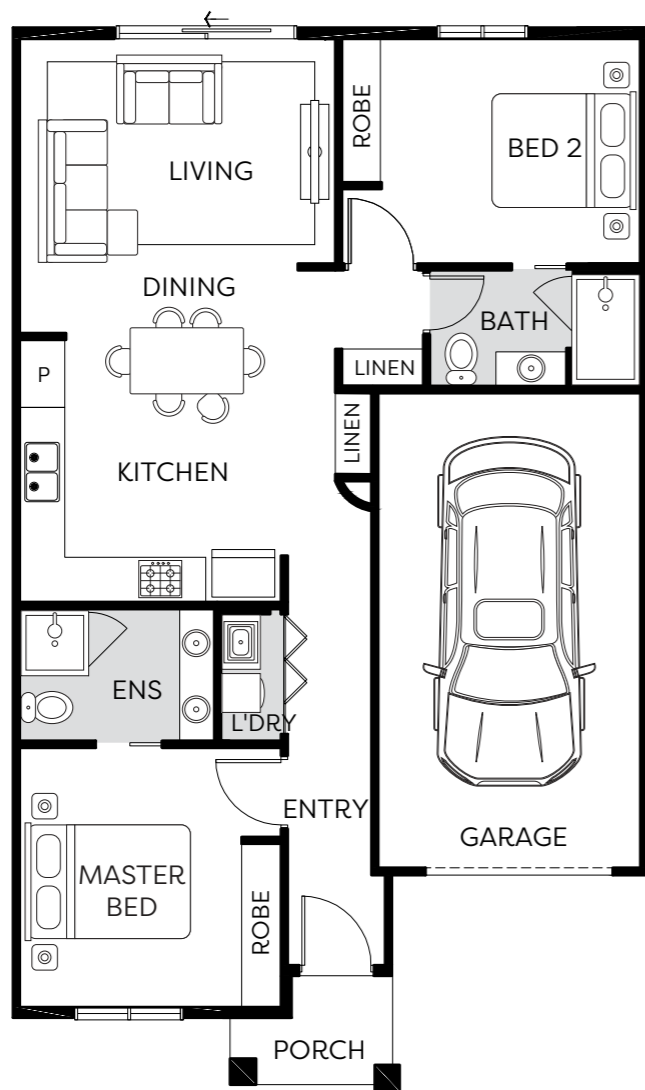
2 2 1



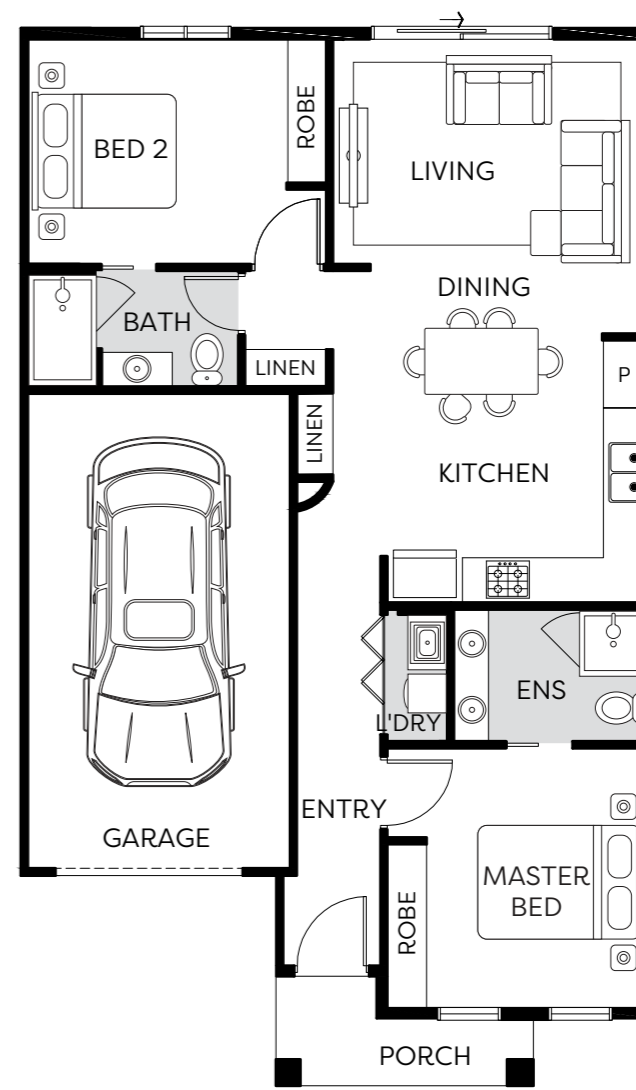
THE STRATFORD

11.65 SQ | LOT 90

2 2 1



This plan and information is indicative only and may vary without notice. Furniture or vehicles are not included in the sale of the lot. The image depicted here is indicative only. Facade finishes and colours may vary. CDB-U 50036.



This plan and information is indicative only and may vary without notice. Furniture or vehicles are not included in the sale of the lot. The image depicted here is indicative only. Facade finishes and colours may vary. CDB-U 50036.



THE LINDEN

11.81 SQ | LOT 91

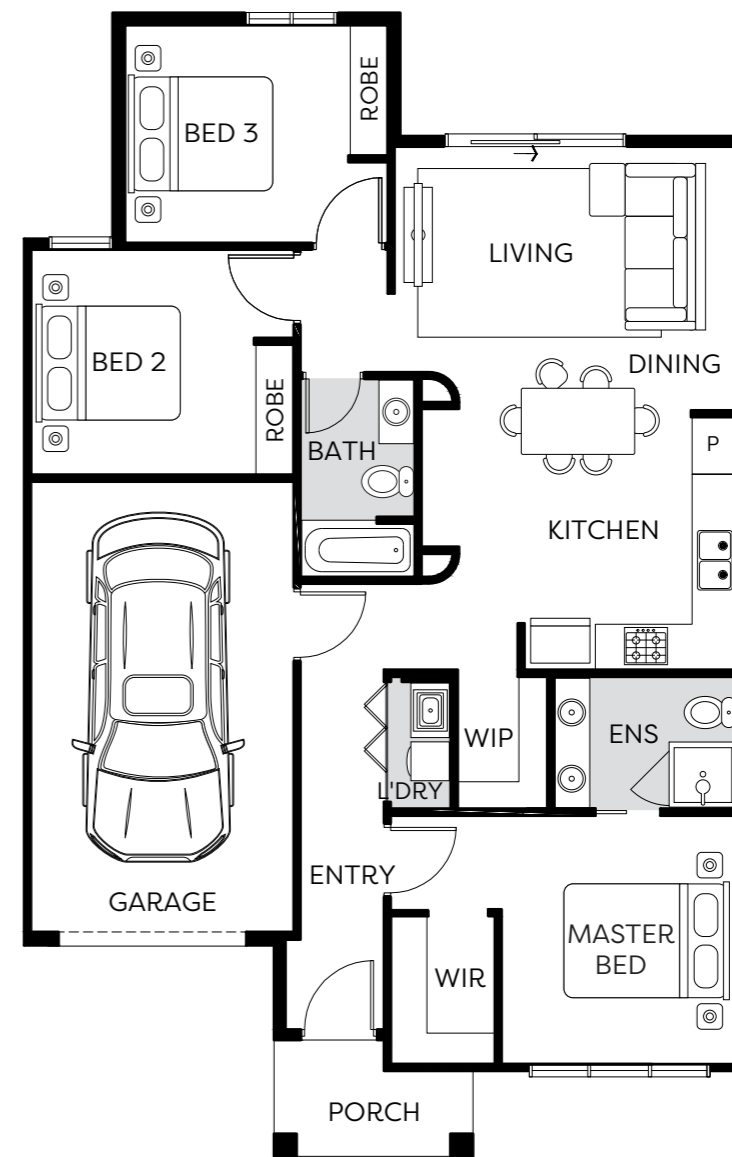
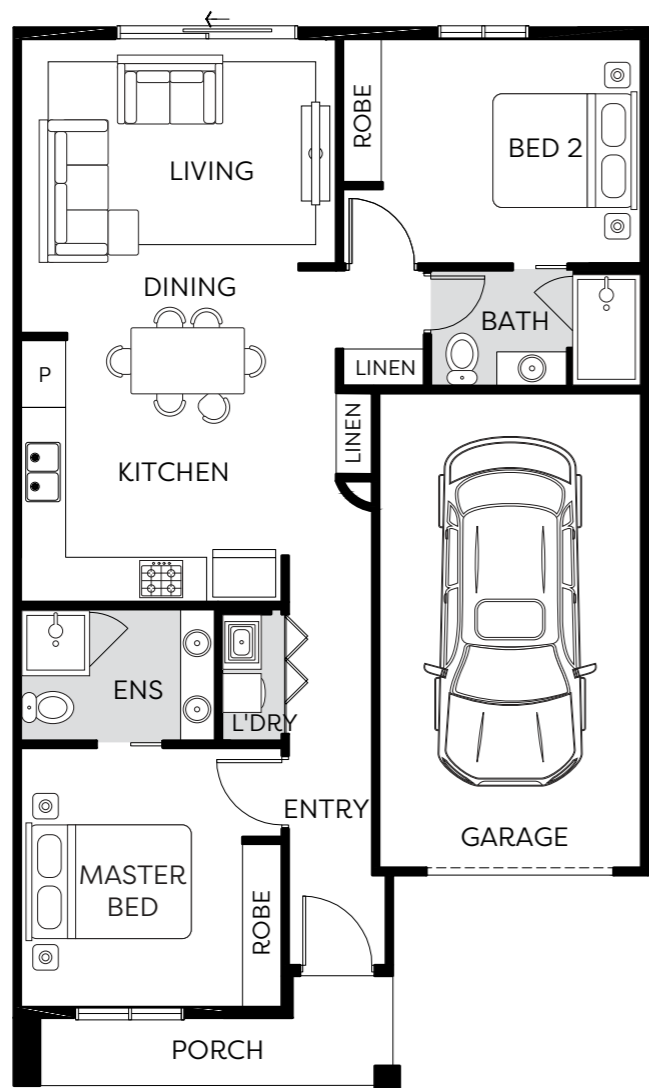
2 2 1



THE ELMWOOD

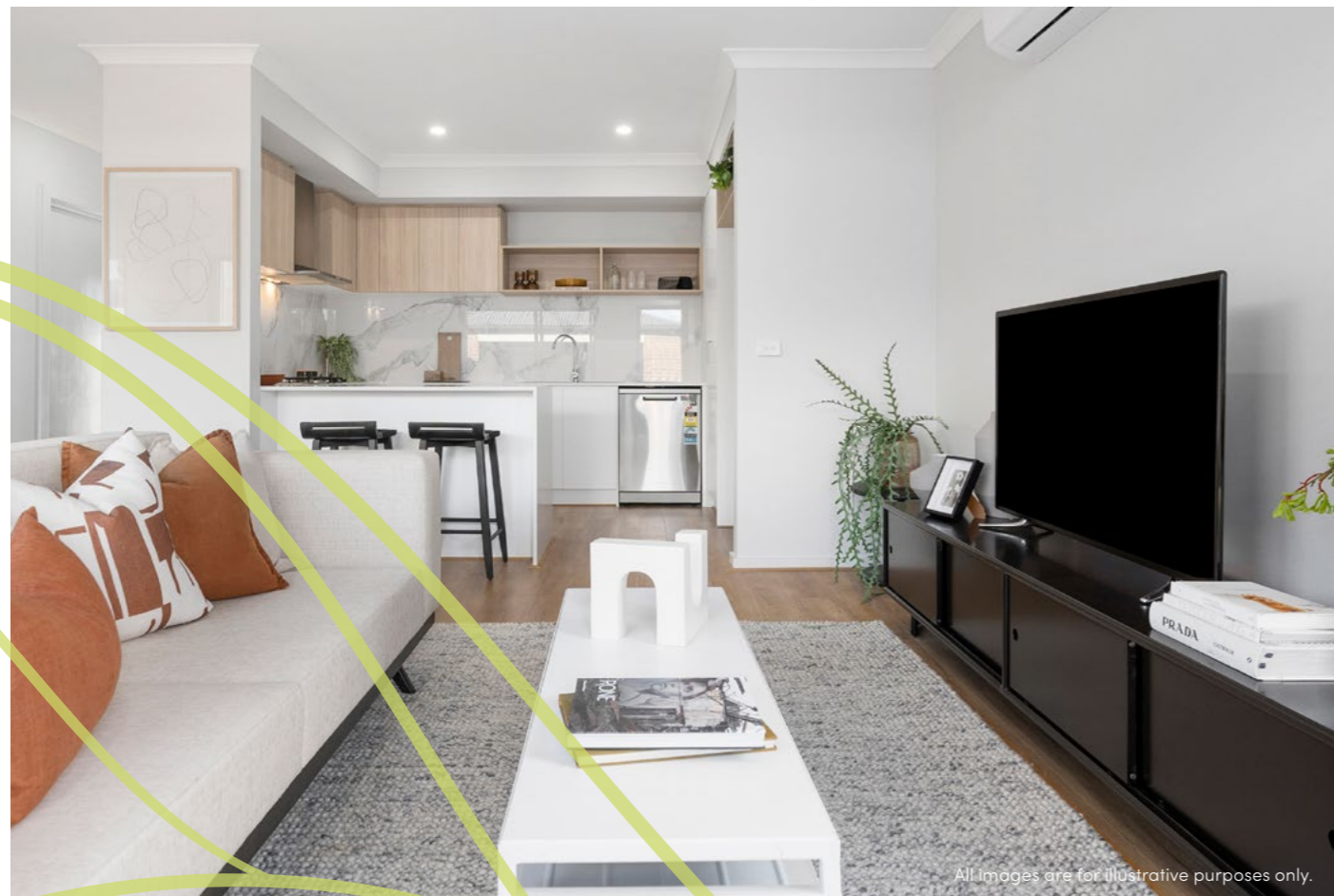
13.16 SQ | LOT 92

3 2 1

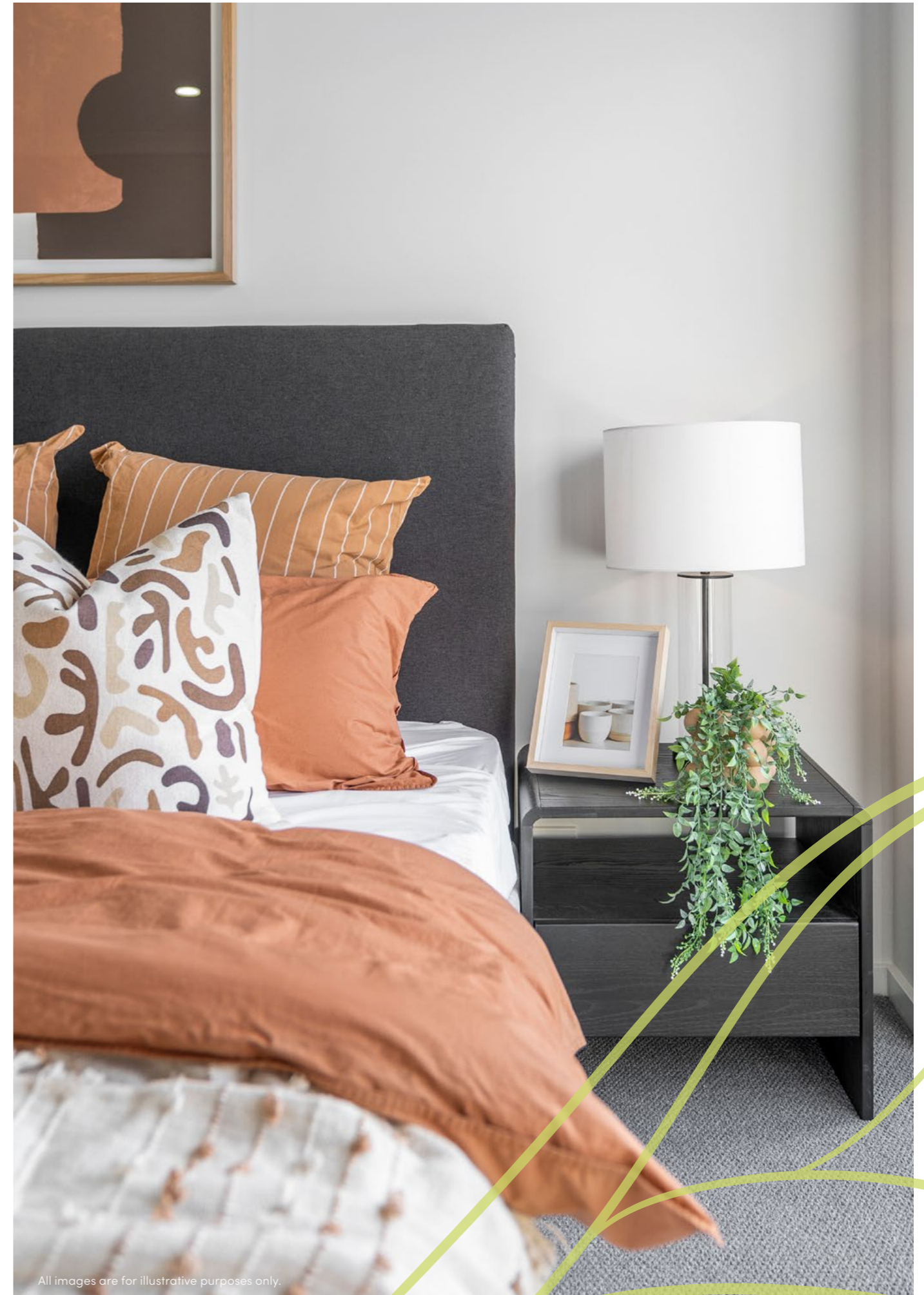


This plan and information is indicative only and may vary without notice. Furniture or vehicles are not included in the sale of the lot. The image depicted here is indicative only. Facade finishes and colours may vary. CDB-U 50036.

This plan and information is indicative only and may vary without notice. Furniture or vehicles are not included in the sale of the lot. The image depicted here is indicative only. Facade finishes and colours may vary. CDB-U 50036.



All images are for illustrative purposes only.



All images are for illustrative purposes only.

SOHO LIVING INCLUSIONS

INTERNAL FEATURES

Ceiling Height: 2590mm ceiling height (nominal) to single storey with 75mm cove cornice. 2590mm ceiling height (nominal) to ground floor of double storey homes. 2440mm ceiling height (nominal) to first floor. 75mm cove cornice throughout.

Room Doors: Flush panel Honeycomb Core 2040mm high to single storey. 2040mm high to ground floor and first floor of double storey.

Room Door Furniture: Passage set. Provide Alba Chrome levers through Chrome finish.

Mouldings: Skirtings – 67x18mm square edge primed MDF.
Architraves – 67x18mm square edge primed MDF.

Plaster: Ceiling Plaster. 10mm plasterboard finish.

Wall Plaster: Plasterboard 10mm thick. Water resistant plasterboard to Ensuite, Bathroom and above Laundry trough.

PAINT

Internal and External: Two coats.

Woodwork and Skirting: Two coats.

HEATING & COOLING

Panel heating unit installed to living areas and bedrooms (excludes wet areas and area's with split systems) as per manufacturers/ suppliers recommendations for home size.

HOT WATER SYSTEM

Hot water unit in accordance with estate design guidelines.

KITCHEN

European inspired oven 600mm.

European inspired cooktop 600mm 4 burner stainless steel gas cooktop.

European inspired rangehood 600mm stainless steel.

European inspired dishwasher 600mm.

Sink: Stainless steel double bowl sink.

Tap: Mixer gooseneck in chrome finish.

Bench Top: Engineered stone benchtop 20mm. Choose colour from SOHO Living colour scheme.

Splashback: Selected as per SOHO Living colour scheme.
Regent design white subway tiles.



All images are for illustrative purposes only.

BATHROOM, ENSUITE, POWDER ROOM & WC

Mirror: Polished edges to full width of vanities sitting on 200mm tile splashback.

Basin: Ceramic abovement 440mm round, 120mm high. No tap hole low profile square inset basin (white), chrome waste 1 tap hole/overflow.

Vanity Unit: Floating vanity unit on tiled pedestal.

Bench Top: Engineered stone benchtop 20mm. Choose colour from SOHO Living colour scheme.

Bath: 1525/1675mm acrylic bath (white) in tiled podium. (Design Specific).

Shower Bases: Ceramic tiled shower base. Selection from SOHO Living colour scheme range Stainless Steel Centre Waste.

Shower Screens: 1950mm high semi frameless with pivot door and clear laminated glass.

Taps and Outlets: Ensuite Shower hand shower on rail.
Bathroom Shower – Shower hand shower on rail.
Bath (Wall Mounted) – Straight wall bath outlet and wall mixer.
Basin (Wall Mounted) – Wall mixer.

Accessories: Toilet roll holders chrome and double towel rails.

Toilet Suite: China toilet suite in white with soft close seat.

LAUNDRY

Trough: Design specific.

Base Cupboard: Up to 800mm wide fully lined modular cabinet or Stainless steel 42L Tub and Cabinet (Design specific). Refer to working drawings.

Bench Top: Laminate with square edge (Design specific).

Tapware: Sink mixer in chrome finish.



All images are for illustrative purposes only.



All images are for illustrative purposes only.

IT'S ALL INCLUDED!

ELECTRICAL

Internal Light Points: Recessed LED downlight in white non-metallic polyamide housing with diffuser.

External Light Points: (2 No) flood light wall mounted light fitting.

Power Points: White surround, double power points throughout excluding dishwasher, microwave and refrigerator provision, where a single power point is provided.

Smoke Detector: Hardwired with battery backup.

Exhaust Fans: Above all showers and toilet not opening to outside air, 250mm with self-sealing air flow draft stoppers.

TV Points: To Family and Master Bedroom.

Telephone Point: To Kitchen and Master Bedroom.

Safety Switch: Residual Current Devices safety switch and circuit breakers to meter box.

PLUMBING

(2 No) garden taps, one located to the front water meter and one adjacent to the external Laundry door.

TILING

Ceramic Floor Tiles: Selected from SOHO Living colour scheme 450x450mm to Laundry, Ensuite, Bathroom, WC, and Powder room.

Ceramic Wall Tiles: Selected from SOHO Living colour scheme 450x450mm to Laundry, Ensuite, Bathroom, WC, Powder room, shower recesses and above bath.

FLOOR COVERINGS

Carpet: Selected from SOHO Living colour scheme to Bedrooms, WIR, Activity and Staircase.

Timber Laminate: Selected from SOHO Living colour scheme timber look laminate flooring to Entry, Kitchen, WIP, Meals, Family, Living, Rear Hallway, Lounge and Study..

STORAGE

Shelving: Robes – One white melamine shelf and hanging rail.
Walk in Robe – One white melamine shelf and hanging rail.
Pantry/Linen – Four white melamine shelves.
Broom – One white melamine shelf (Design specific).

STAIRS (DOUBLE STOREY HOMES)

Plaster dwarf walls to stairs and void areas with painted timber handrail (refer to staircase layout).

GARAGE

Garage Door: 2100mm high x 4800mm wide Colorbond sectional door in flat line profile.

Remote Control: Remote control unit to front garage door with 2 handsets.

OUTDOOR

Landscaping: Garden and plants to the front and rear. Instant turf to rear yard. Or as per landscape design on drawings.

Fencing: 1800mm high timber paling/Colorbond including wing fence and gate to suit estate design covenants.

Paving: Coloured concrete to driveway and front path.

Letterbox: Precast concrete letterbox with colour to match house.

Clothesline: Fold out clothesline in rear yard.

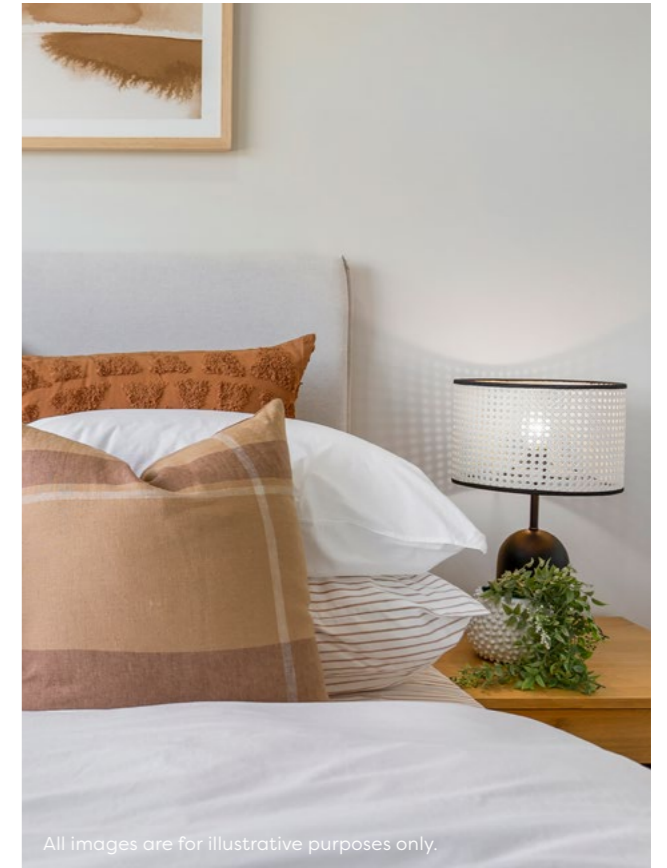
ABOUT US

Member of Master Builders Association & Housing Industry of Australia.

10-year structural guarantee.

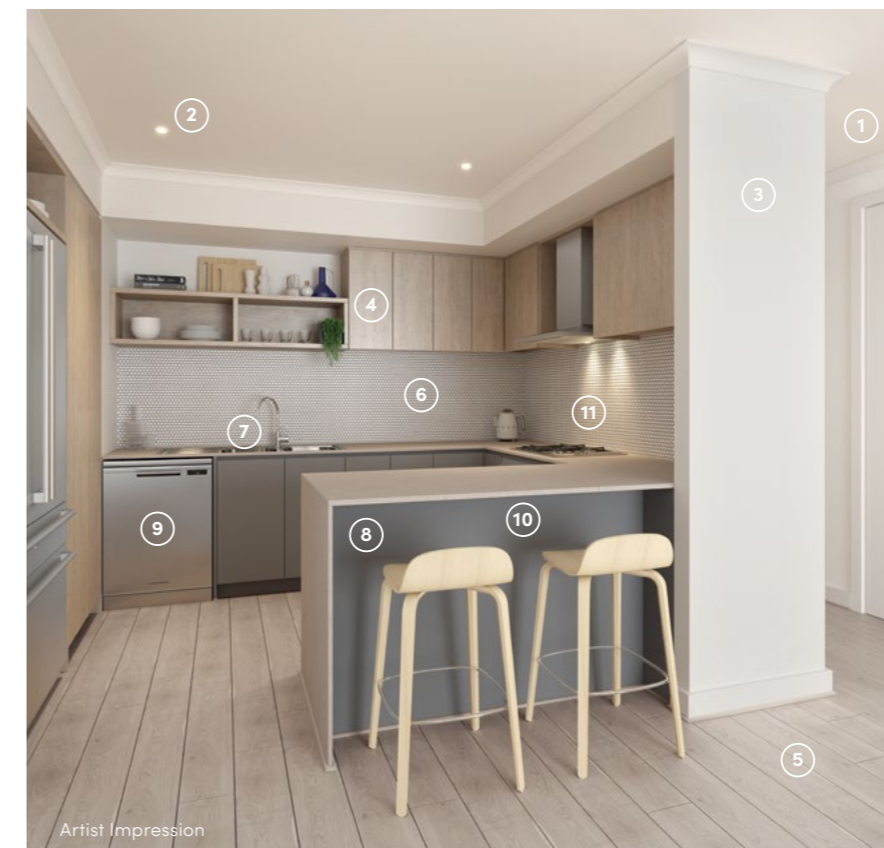
SOHO Living reserves the right to amend specification without prior notice. Products may vary depending on availability. Imagery for illustrative purposes.

SOHO LIVING COLOUR SCHEMES



All images are for illustrative purposes only.

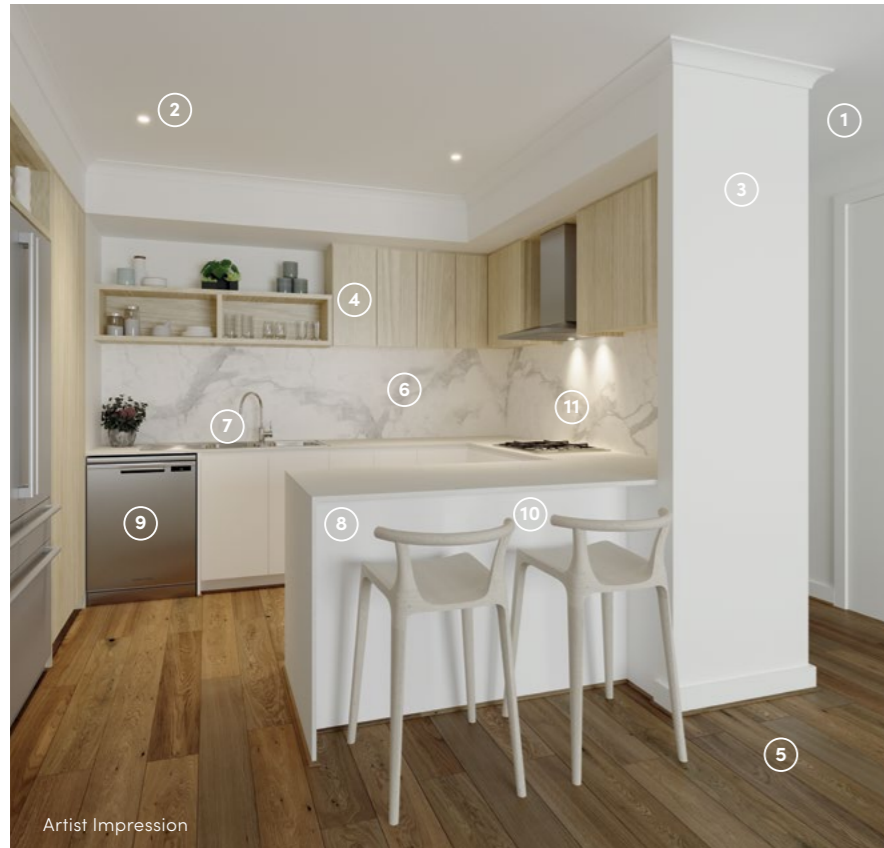
COLOUR SCHEME URBAN



- ① 2590mm Ceilings to ground floor
- ② LED Downlights
- ③ Wattle Paint
- ④ Overhead laminex cupboards (Rural Oak)
- ⑤ Quality Timber Laminate Flooring (Rustic Maize)
- ⑥ Premium Splashback (White Penny Round)
- ⑦ 200mm Gooseneck tap & 1.75L sink insert
- ⑧ 20mm Caesarstone Mineral benchtop with waterfall edge (Oyster)
- ⑨ Fisher & Paykel Dishwasher
- ⑩ Laminex Cabinetry (Storm Cloud-140)
- ⑪ Fisher & Paykel 600mm Rangehood & Cooktop, Fisher & Paykel 600mm Oven

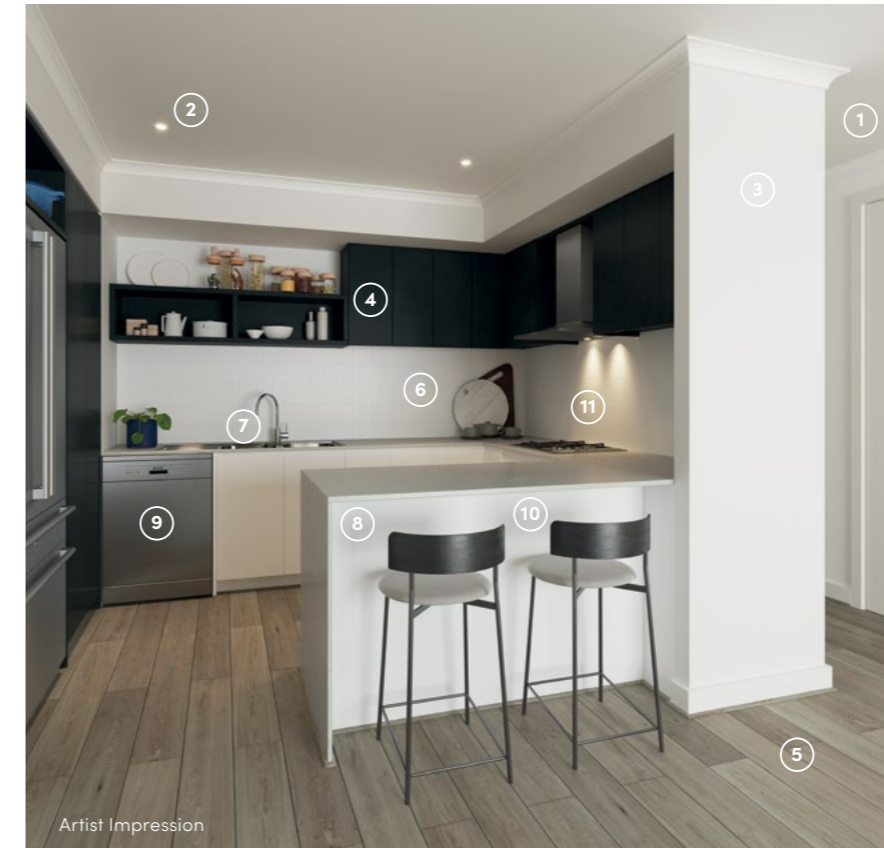
Artist Impression

COLOUR SCHEME COASTAL



- ① 2590mm Ceilings to ground floor
- ② LED Downlights
- ③ Watty! Paint
- ④ Overhead laminex cupboards (Bleached Elm)
- ⑤ Quality Timber Laminate Flooring (Rustic Oatmeal)
- ⑥ Premium Splashback
- ⑦ 200mm Gooseneck tap & 1.75L sink insert
- ⑧ 20mm Caesarstone Mineral benchtop with waterfall edge (Snow)
- ⑨ Fisher & Paykel Dishwasher
- ⑩ Laminex Cabinetry (Calm White)
- ⑪ Fisher & Paykel 600mm Rangehood & Cooktop, Fisher & Paykel 600mm Oven

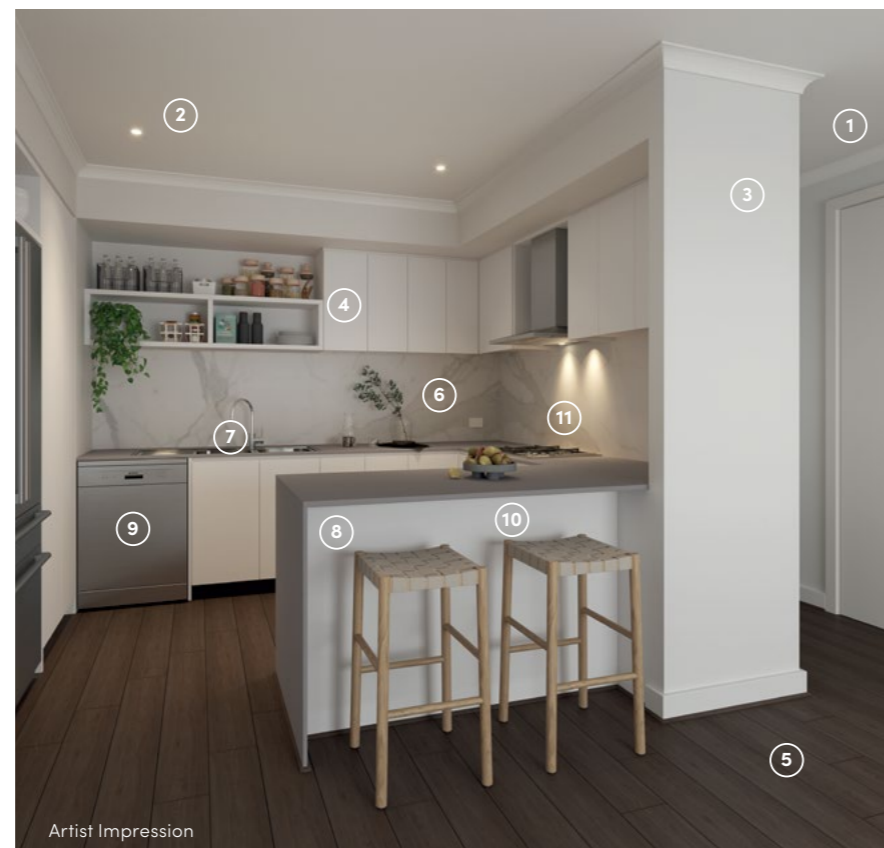
COLOUR SCHEME NOVA



- ① 2590mm Ceilings to ground floor
- ② LED Downlights
- ③ Watty! Paint
- ④ Overhead laminex cupboards (Black Birchply)
- ⑤ Quality Timber Laminate Flooring (Rustic Buckwheat)
- ⑥ Premium Splashback
- ⑦ 200mm Gooseneck tap & 1.75L sink insert
- ⑧ 20mm Caesarstone Mineral benchtop with waterfall edge (Alpine Mist)
- ⑨ Fisher & Paykel Dishwasher
- ⑩ Laminex Cabinetry (Calm White)
- ⑪ Fisher & Paykel 600mm Rangehood & Cooktop, Fisher & Paykel 600mm Oven

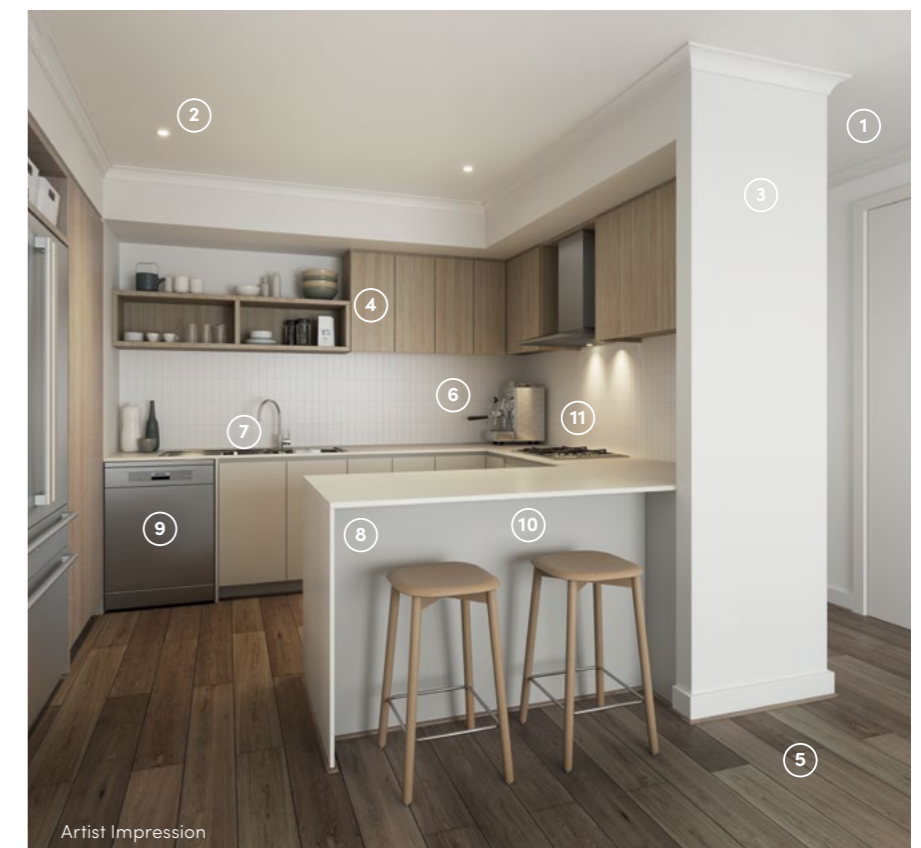
COLOUR SCHEME ECHO

- ① 2590mm Ceilings to ground floor
- ② LED Downlights
- ③ Watty! Paint
- ④ Overhead laminex cupboards (Calm White)
- ⑤ Quality Timber Laminate Flooring (Rustic Rye)
- ⑥ Premium Splashback
- ⑦ 200mm Gooseneck tap & 1.75L sink insert
- ⑧ 20mm Caesarstone Mineral benchtop with waterfall edge (Raw Concrete)
- ⑨ Fisher & Paykel Dishwasher
- ⑩ Laminex Cabinetry (Calm White)
- ⑪ Fisher & Paykel 600mm Rangehood & Cooktop, Fisher & Paykel 600mm Oven



COLOUR SCHEME BOTANIC

- ① 2590mm Ceilings to ground floor
- ② LED Downlights
- ③ Watty! Paint
- ④ Overhead laminex cupboards (Classic Oak)
- ⑤ Quality Timber Laminate Flooring (Rustic Maize)
- ⑥ Premium Splashback
- ⑦ 200mm Gooseneck tap & 1.75L sink insert
- ⑧ 20mm Caesarstone Mineral benchtop with waterfall edge (Organic White)
- ⑨ Fisher & Paykel Dishwasher
- ⑩ Laminex Cabinetry (Alpine Mist)
- ⑪ Fisher & Paykel 600mm Rangehood & Cooktop, Fisher & Paykel 600mm Oven





All images are for illustrative purposes only.

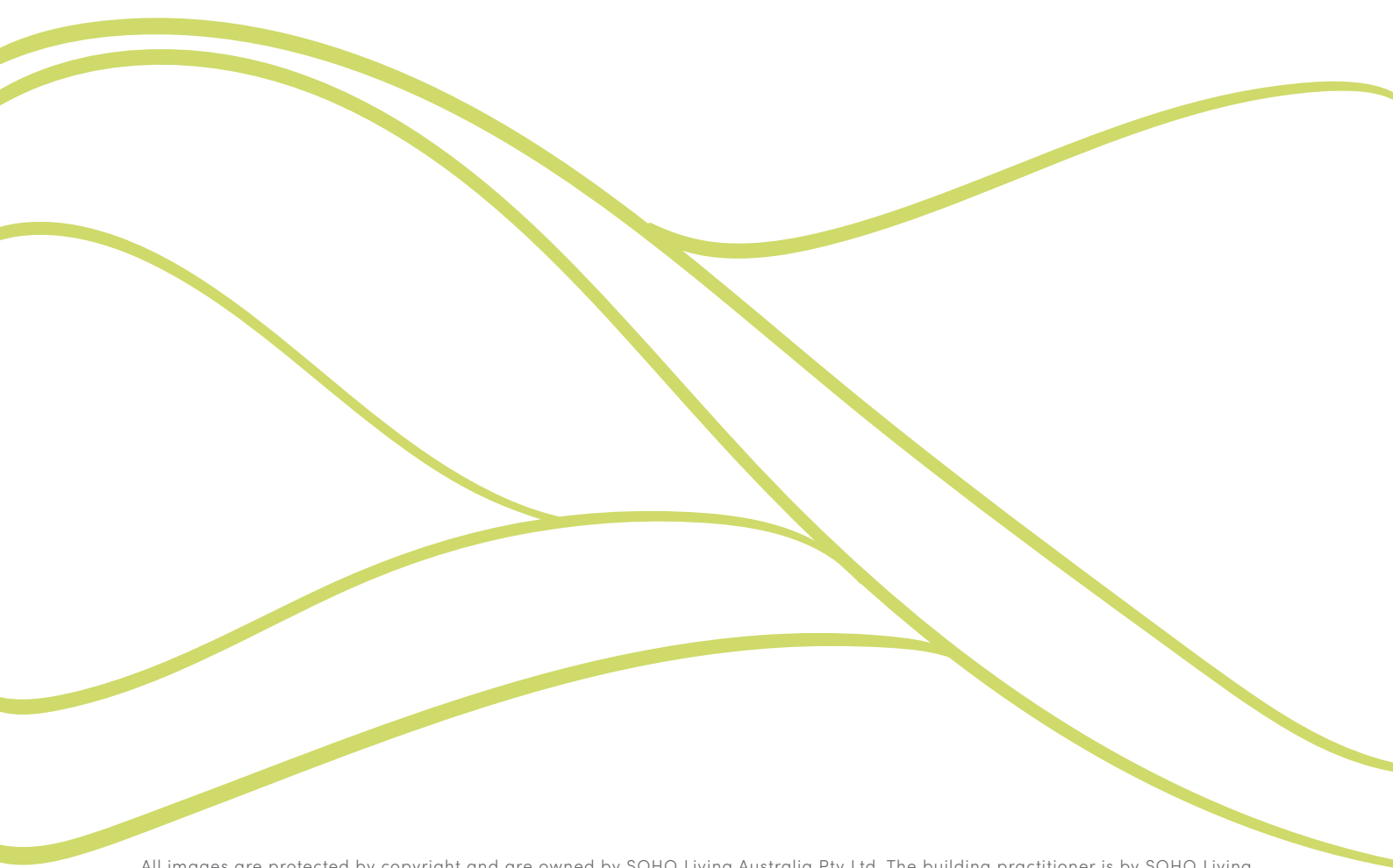


All images are for illustrative purposes only.

A QUALITY **SOHO** PROJECT
LIVING

REGISTER YOUR INTEREST
theavenue@soholiving.com.au

the-avenue.com.au



All images are protected by copyright and are owned by SOHO Living Australia Pty Ltd. The building practitioner is by SOHO Living Australia Pty Ltd trading as SOHO Living, registration number CDB-U50036. Images and photographs contained within this brochure should be used as a guide and depicts an artist impression for illustrative purposes only. They may depict fixtures finishes features furnishings and landscaping not supplied by SOHO Living , please ask your new homes consultant for detailed home designs specific drawings for full extent of inclusions, features, pricing and specifications of your preferred SOHO Living home design colour scheme and or facade. Plans are subject to town planning approval. All information contained within this brochure is accurate at time of February 2025.